

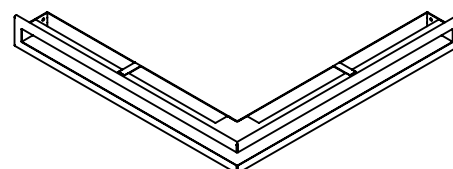
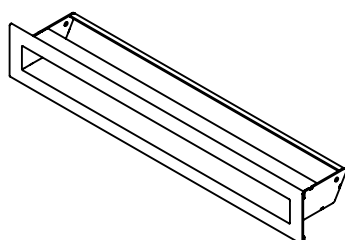
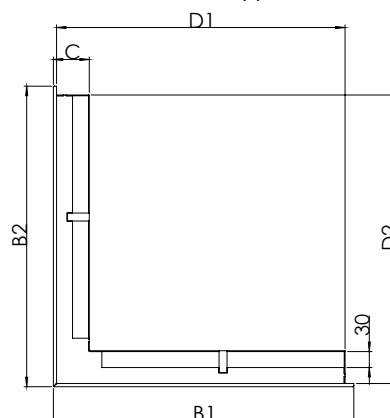
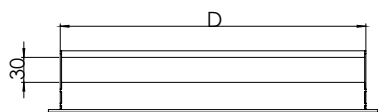
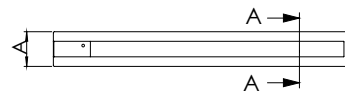
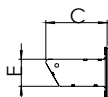
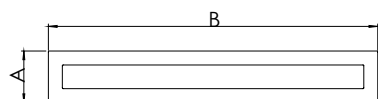
CIĘPŁO Z NATURY

PODSTAWOWE INFORMACJE O PRODUKCIE

- Kratka typu luft montowana w obudowie kominka.
- Wykonane ze stali 1,5mm.
- Dostępne w kolorze czarnym z wykończeniem ze stali nierdzewnej szlifowanej.
- Funkcja nawiewna przy montażu pod wkładem (otwory wentylacyjne skierowane ku górze).
- Funkcja wywiewna przy umieszczeniu nad kominkiem (otwory wentylacyjne skierowane ku dołowi).

KRATKA WENTYLACYJNA **SLIM INOX 6**

| Kod produktu | Wymiary zewnętrzne | | | Wymiary otworów montażowych | | Pole czynne kratki | Kod produktu | Wymiary zewnętrzne | | | | Wymiary otworów montażowych | | | Pole czynne kratki |
|--------------|--------------------|------|----|-----------------------------|----|--------------------|---------------------------------|--------------------|-----|-----|----|-----------------------------|-----|----|--------------------|
| | A | B | C | D | E | | | A | B1 | B2 | C | D1 | D2 | E | |
| SL-6x20 | 60 | 200 | 74 | 175 | 35 | 51 | SL-6x56x56 | 60 | 560 | 560 | 67 | 546 | 546 | 35 | 327 |
| SL-6x40 | 60 | 400 | 74 | 375 | 35 | 111 | SL-6x60x40L L - in / R - out | 60 | 600 | 400 | 67 | 586 | 386 | 35 | 291 |
| SL-6x60 | 60 | 600 | 74 | 575 | 35 | 171 | SL-6x60x40R R - in / L - out | 60 | 400 | 600 | 67 | 386 | 586 | 35 | 291 |
| SL-6x80 | 60 | 800 | 74 | 775 | 35 | 231 | SL-6x80-45L L - in / R - out | 60 | 800 | 450 | 67 | 786 | 436 | 35 | 366 |
| SL-6x100 | 60 | 1000 | 74 | 975 | 35 | 291 | SL-6x80x45R R - in / L - out | 60 | 450 | 800 | 67 | 436 | 786 | 35 | 366 |



PRODUCT INFORMATION

- Luft type vent, mounted in the fireplace housing.
- Made of 1,5mm thick steel.
- Available in black, with stainless steel grinded finish.
- Supply function at assembly under the fireplace insert (ventilation openings are placed up).
- Exhaust function at assembly over the fireplace insert (ventilation openings are placed down).

VENT SLIM INOX 6

| Product code | External dimensions | | | | | Mounting holes dimensions | Active area of grids | Product code | External dimensions | | | | | Mounting holes dimensions | Active area of grids |
|--------------|---------------------|------|----|-----|----|---------------------------|---------------------------------|--------------|---------------------|-----|----|-----|-----|---------------------------|----------------------|
| | A | B | C | D | E | | | | A | B1 | B2 | C | D1 | | |
| SL-6x20 | 60 | 200 | 74 | 175 | 35 | 51 | SL-6x56x56 | 60 | 560 | 560 | 67 | 546 | 546 | 35 | 327 |
| SL-6x40 | 60 | 400 | 74 | 375 | 35 | 111 | SL-6x60x40L L - in / R - out | 60 | 600 | 400 | 67 | 586 | 386 | 35 | 291 |
| SL-6x60 | 60 | 600 | 74 | 575 | 35 | 171 | SL-6x60x40R R - in / L - out | 60 | 400 | 600 | 67 | 386 | 586 | 35 | 291 |
| SL-6x80 | 60 | 800 | 74 | 775 | 35 | 231 | SL-6x80-45L L - in / R - out | 60 | 800 | 450 | 67 | 786 | 436 | 35 | 366 |
| SL-6x100 | 60 | 1000 | 74 | 975 | 35 | 291 | SL-6x80x45R R - in / L - out | 60 | 450 | 800 | 67 | 436 | 786 | 35 | 366 |

